



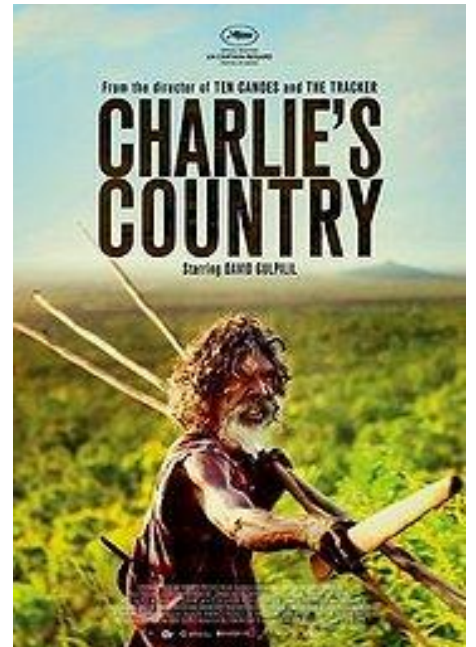
# CHARLIE'S COUNTRY

Spring  
Season  
2015

Release: 2013  
Cert (UK): 15  
Runtime: 108 mins  
Director: Rolf de Heer  
Screenwriters: Rolf de Heer and David Gulpilil  
Cast: David Gulpilil

Charlie (Gulpilil) lives in a remote Aboriginal community in Arnhem Land, where he and the other men of the community struggle with cultural ties in world dominated by white law and both deliberate and incidental racism. With the primarily white police force, Charlie is congenial, fooling them into thinking he is an expert tracker. He uses cultural misunderstandings to his advantage, but then is obligated to heed white laws; his lovingly crafted hunting spear is confiscated for being a weapon.

We follow Charlie as he moves out of the community and tries to live in his country. Like his ancestors he builds a shelter, paints bark, and carves a new hunting stick with which to catch barramundi in the river. But he is lonely: separated from his community, and with ancestors long gone, the world Charlie wants to exist no longer does.



Charlie's Country is the third film in an informal trilogy of collaborations between writer/director Rolf de Heer and actor David Gulpilil. (pictured left) Ten Canoes (2006) showed Aboriginal culture before white settlement, and The Tracker (2002) explored the relationship between white and Aboriginal men in the early 20th century. Now Charlie's Country explores the ongoing repercussions in contemporary Australia.